

Developed an Enterprise Wide Performance Tracking Tool for a Fortune 500 Company

• Situation & Challenges

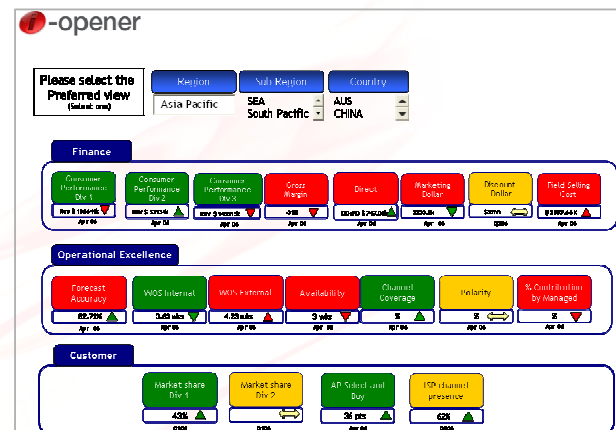
To track performance, the client generated multiple disparate reports across departments every month. As a result, no complete picture of the company's performance was formed and very few insights were generated. In addition, multiple systems, departments and data stakeholders made data collection a challenge, thus rendering the entire procedure inefficient.

• Our Approach

We proposed the adoption of the i-Opener tool which would help overcome these challenges.

Our consultants defined KPIs, objectives and metrics that needed to be tracked, finalized data sources and established processes with timelines for timely data collection.

Finally, we built an analytical & visualization layer of the dashboard with live data.



• Result

Due to the real-time and accurate tracking process put in place a marked improvement in the transparency of performance and accuracy of data was observed. Greater business agility also resulted in faster and more effective decision making.